



YAWAL

MV

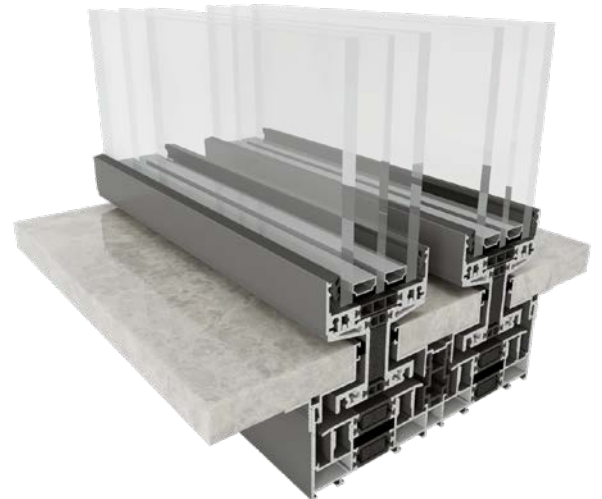
LARGE-SIZE SLIDING  
DOOR SYSTEM

Class S

no barriers

## MOREVIEW CLASS S – SYSTEM FEATURES

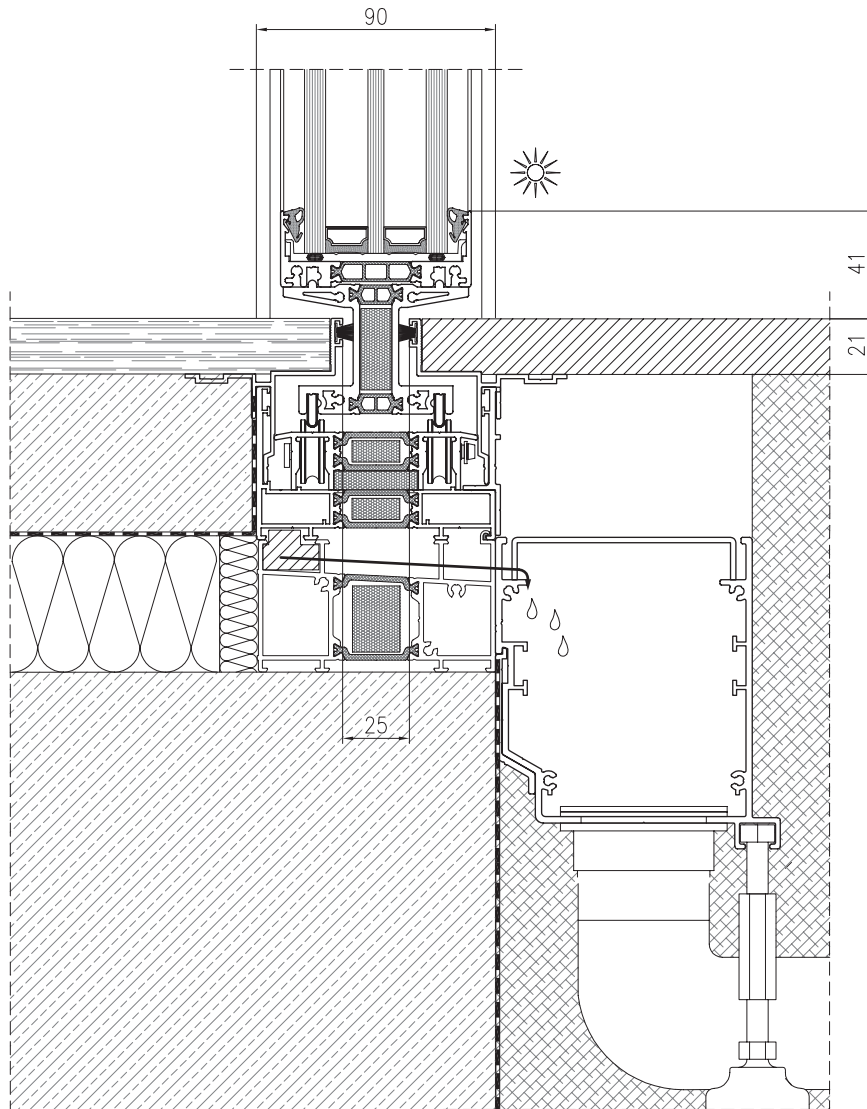
- comfort of use and cleaning,
- lightness in moving the leaves,
- an innovative solution for demanding customers,
- no thermal bridge - aluminium I-section with a thermal spacer ensures no condensation and prevents possible freezing at the threshold level,
- a very wide range of arrangement possibilities,
- possibility of automatic opening, which allows to increase the weight of the leaf up to 1200 kg (up to 400 kg with manual opening),
- the bottom frame and guide rails are recessed into the floor, making them completely invisible.
- the system is characterised by an aesthetically appealing narrow gap of only 25 mm.
- possibility of combination with other Yawal systems.



See the product on  
the website

Picture: Examples of the system use.

### CROSS-SECTION THROUGH THE SLOTTED SOLUTION



MOREVIEW CLASS S - LARGE-SIZE  
SLIDING DOOR SYSTEM

### SLOTTED SOLUTIONS

MOREVIEW CLASS S is an ultra-modern solution that allows for almost complete elimination of the boundary between the inside and the outside. All structure elements are hidden under the floor. The user only sees narrow "gaps". This solution enables virtually unlimited possibilities of arranging the floor at the contact point of the house interior and the external surroundings, e.g. terrace.

