

DP
180

OVERHEAD SLIDING DOORS SYSTEM

Primeview

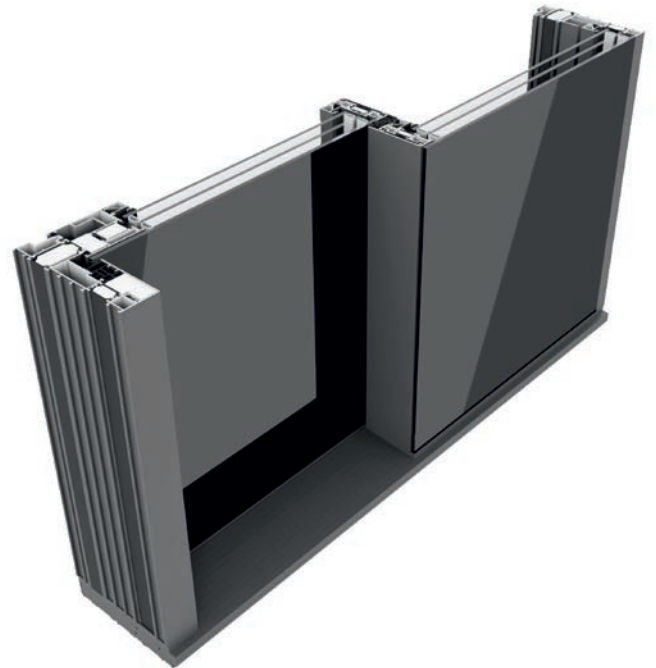


YAWAL

excellent thermal insulation properties

DP 180 PRIMEVIEW GLASS – SYSTEM FEATURES

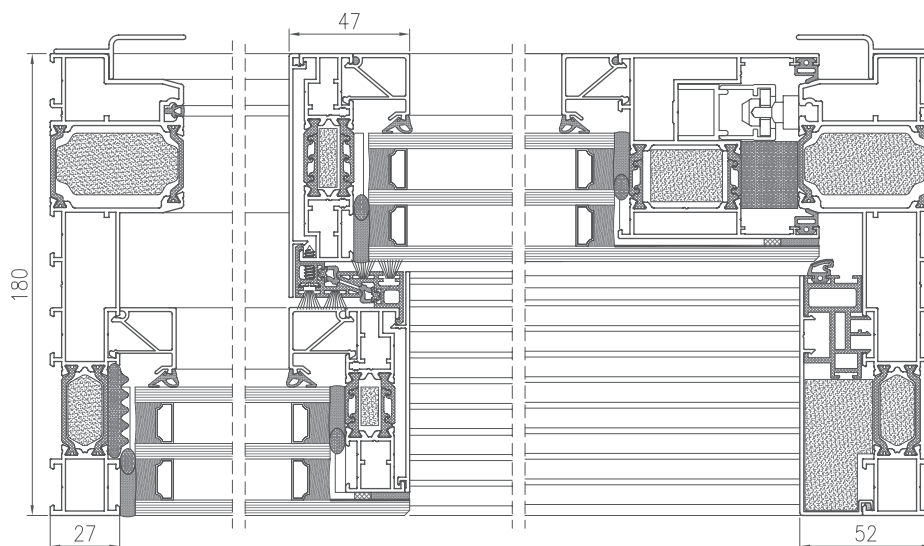
- a spectacular solution which completely eliminates the visibility of aluminium elements on the outside of the structure by adhered glass,
- enhanced natural light thanks to wide and large glazing surfaces,
- possibility of glazing from the outside with the possibility of hiding the door frame in the floor, ceiling and insulation layer,
- compatible with other systems in the Yawal offer.



See the product on
the website

Picture: Examples of the system use.

CROSS SECTION THROUGH
DP 180 PRIMEVIEW GLASS DOOR



TECHNICAL PARAMETERS - DP 180 GLASS

ENERGY	Thermal insulation EN 10077-2	Uw from 0,7 W/m ² K
COMFORT	Air permeability EN 12207	Class 4
	Water tightness EN 12208	E1650
SAFETY	Wind load resistance EN 12210	C4
	Anti-theft protection EN 1627	RC2

TECHNICAL PARAMETERS - DP 180 GLASS

Frame structural depth	180 mm with the extension possibility
Leaf structural depth	81 mm
Infill thickness	27 ÷ 71 mm
Maximum dimensions L x H	leaf 3210 x 3300 mm
Maximum weight of manual leaf	440 kg
Maximum weight of automatic leaf	600 kg
Maximum weight of fixed part	1200 kg
Structure type / leaves diagram	Diagrams: A, C, G