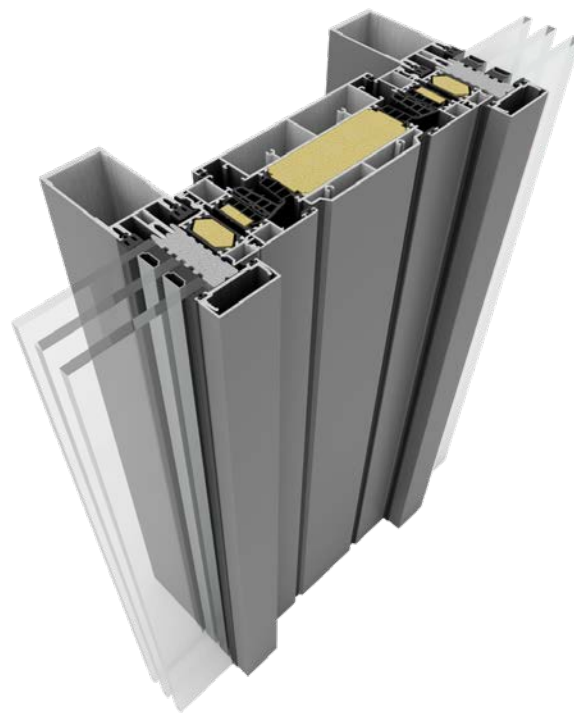




YAWAL

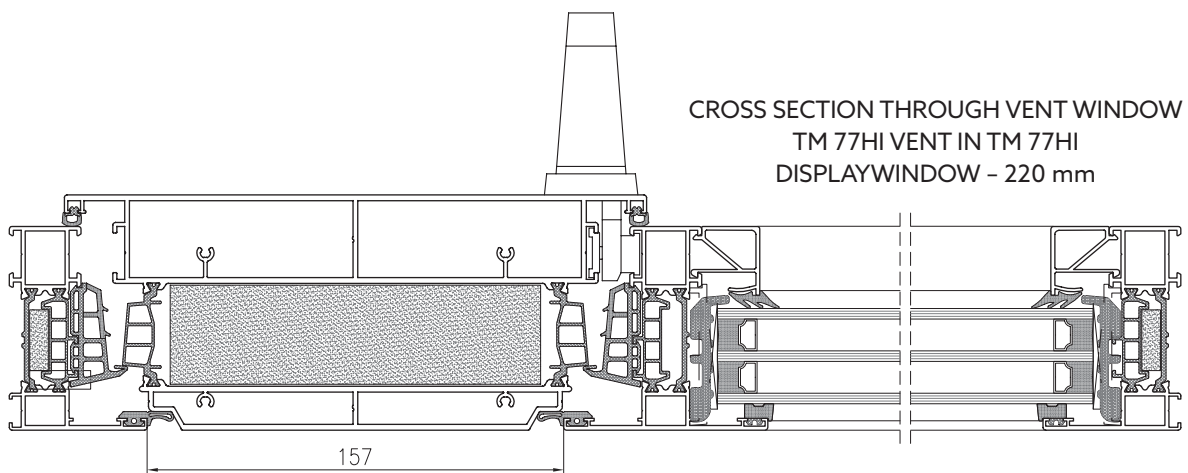
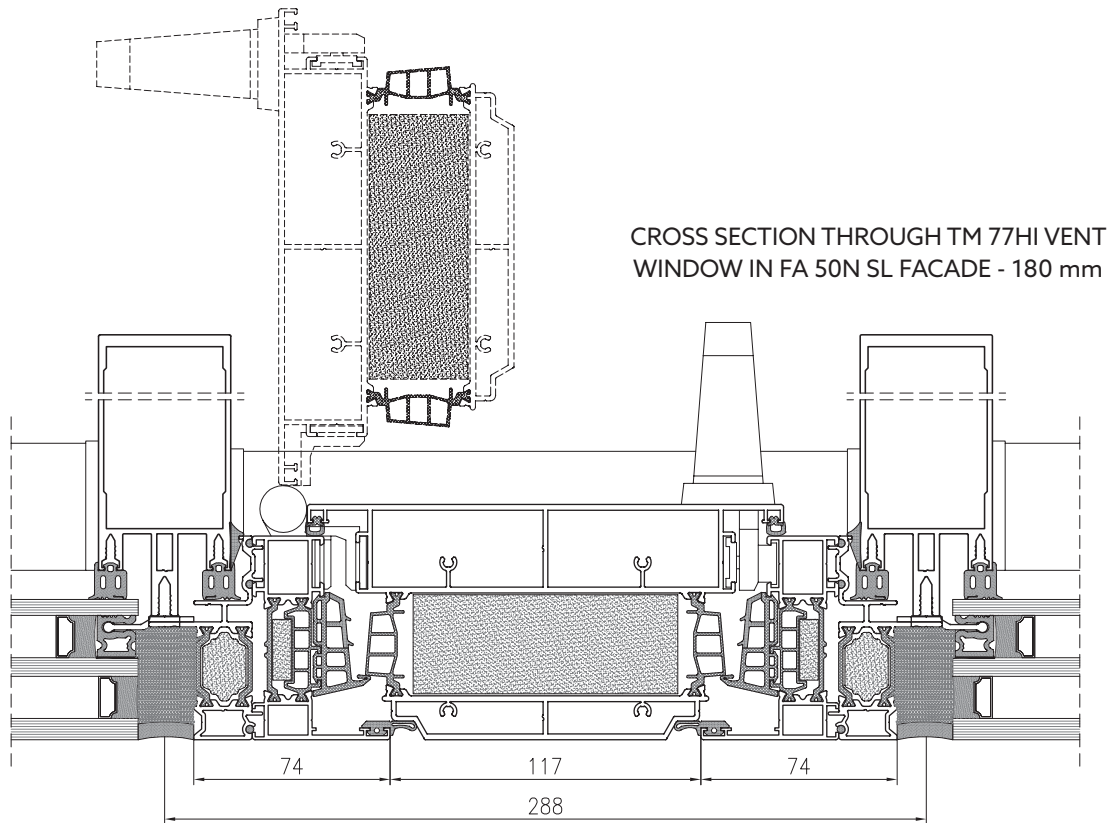
TM 77HI VENT - SYSTEM FEATURES

- possibility of installing into FA 50N and FA 50N SL façades,
- the use of a standard frame and gasket in the system structure,
- sealing made of PIR,
- system allows you to adhere the glass, which increases safety and aesthetics,
- possibility of creating window structures up to 3 m high,
- safe and efficient room ventilation system,
- possibility of combination with other Yawal systems.



See the product
on the website

Picture: Office Building WAVE, Gdańsk
Design: Medusa Group Sp. z o.o. Sp.k., Bytom
Aluminium manufacturer: POKO-AL Sp. z o.o. Sp.k, Gdańsk



TECHNICAL PARAMETERS - TM 77HI VENT

ENERGY	Thermal insulation EN 10077-2	Uw from 0,9 W/m ² K
COMFORT	Air permeability EN 12207	Class 4
	Water tightness EN 12208	E1500
SAFETY	Wind load resistance EN 12210	Class C5/B5

TECHNICAL PROPERTIES - TM 77HI VENT

Frame structural depth	77 mm
Sash/leaf structural depth	88,9 mm
Maximum dimensions L x H	180 x 3000 mm, 220 x 3000 mm
Structure type	turn vent window