

TM  
77N  
EI

FIRE PROTECTION DOOR SYSTEM



excellent thermal insulation and safety

### TM 77N EI - SYSTEM FEATURES

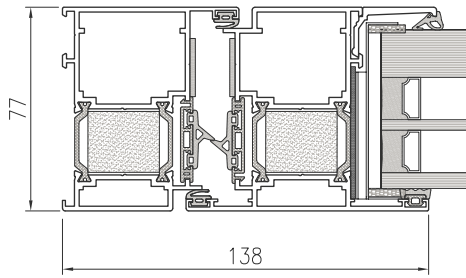
- excellent thermal insulation combined with fire protection in classes EI 30 and EI 60,
- new clips (prestige) with new gaskets,
- one type of ceramic gasket available in white or black,
- glazing plates to allow installation without undercutting the clips,
- possibility to use a three-point anti-panic lock with counter-cashing device, averse and reverse electric strikers, semi-automatic locking of the passive leaf,
- choice of expanding gasket between three manufacturers,
- door can be installed in the FA 50N EI facade,
- possibility of selecting glass manufacturer: Vetrotech Saint-Gobain, Bohamet, Polfam, Bojar, AGC.



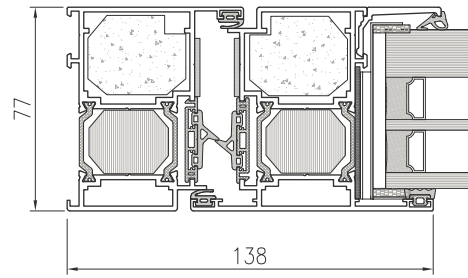
See the product  
on the website

Picture: Examples of the system use.

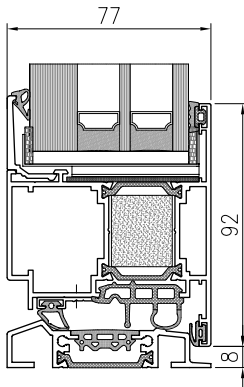
SECTION THROUGH A SINGLE LEAF  
DOOR TM 77N EI 30



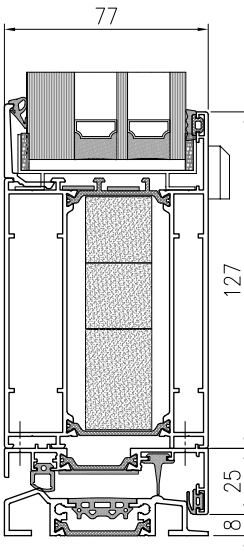
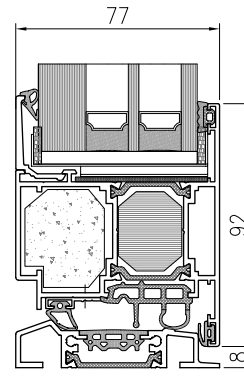
SECTION THROUGH A SINGLE LEAF  
DOOR TM 77N EI 60



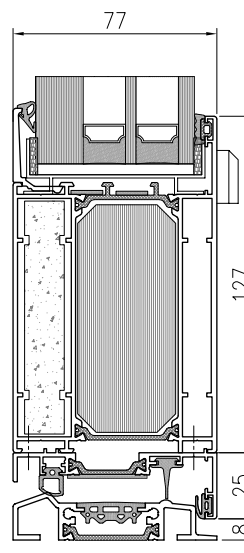
BOTTOM REBATE TM 77N EI 30



BOTTOM REBATE TM 77N EI 60



BOTTOM REBATE  
TM 77N EI 30



BOTTOM REBATE  
TM 77N EI 60

#### TECHNICAL PARAMETERS - TM 77N EI

|         |                               |                                |
|---------|-------------------------------|--------------------------------|
| ENERGY  | Thermal insulation EN 10077-2 | Ud from 1,2 W/m <sup>2</sup> K |
| COMFORT | Air permeability EN 12207     | Class 4                        |
|         | Water tightness EN 12208      | Class E1200                    |
| SAFETY  | Wind load resistance EN 12210 | Class C4/B4                    |
|         | Fire resistance EN 13501-2    | EI 30, EI 60                   |

#### TECHNICAL PROPERTIES - TM 77N EI

|                          |                |
|--------------------------|----------------|
| Frame structural depth   | 77 mm          |
| Sash structural depth    | 77 mm          |
| Infill thickness         | from 61 mm     |
| Maximum dimensions L x H | 2500 x 2600 mm |